

MADISON COUNTY, NY
Health Department

2020-2021 TESTING & CONTACT TRACING PROTOCOLS

Insert Logo

School Reopening COVID-19 Testing Protocol

(As of August 10, 2020)

Ongoing Testing

- If and when a student presents signs or symptoms of COVID-19, (<https://www.cdc.gov/coronavirus/2019-ncov/symptoms-testing/symptoms.html>), the individual should be sent home. The parent or guardian of the student should consult with their child's doctor or a healthcare provider if they should be tested for COVID-19. If a family does not have a doctor or the doctor is unavailable, individuals should call the Upstate University Hospital's COVID-19 Triage Line at 315-464-3979. For a list of testing sites in the Central New York area, please check out <https://www.madisoncounty.ny.gov/2589/Diagnostic-Testing-Sites-for-COVID-19>.
- Staff members who report any symptoms of COVID-19 should contact their primary care provider and discuss whether or not testing is appropriate. If a staff member does not have a doctor or the doctor is unavailable, individuals should call the Upstate University Hospital's COVID-19 Triage Line at 315-464-3979.
- Please note that when an individual with symptoms is tested for COVID-19, they are asked to quarantine by their healthcare provider until they receive their test result. If the test comes back negative, they are notified by their healthcare provider and no longer need to quarantine. If you receive a negative test but still have symptoms, you should only return to school after symptoms have resolved. If the individual was placed in quarantine due to an exposure to a positive case, the individual should remain in quarantine until released by the Madison County Health Department.



School Reopening COVID-19 Contact Testing Protocol

Once a lab-confirmed case has been reported to the Madison County Health Department (MCHD)

If a test comes back positive, they will be notified by their healthcare provider, and the Madison County Health Department will contact them for a case investigation. The individual will be issued an order for isolation for a minimum of 10 calendar days from symptom onset. The Madison County Health Department will conduct daily follow-up calls and release an individual from isolation when appropriate.

Contact Tracing

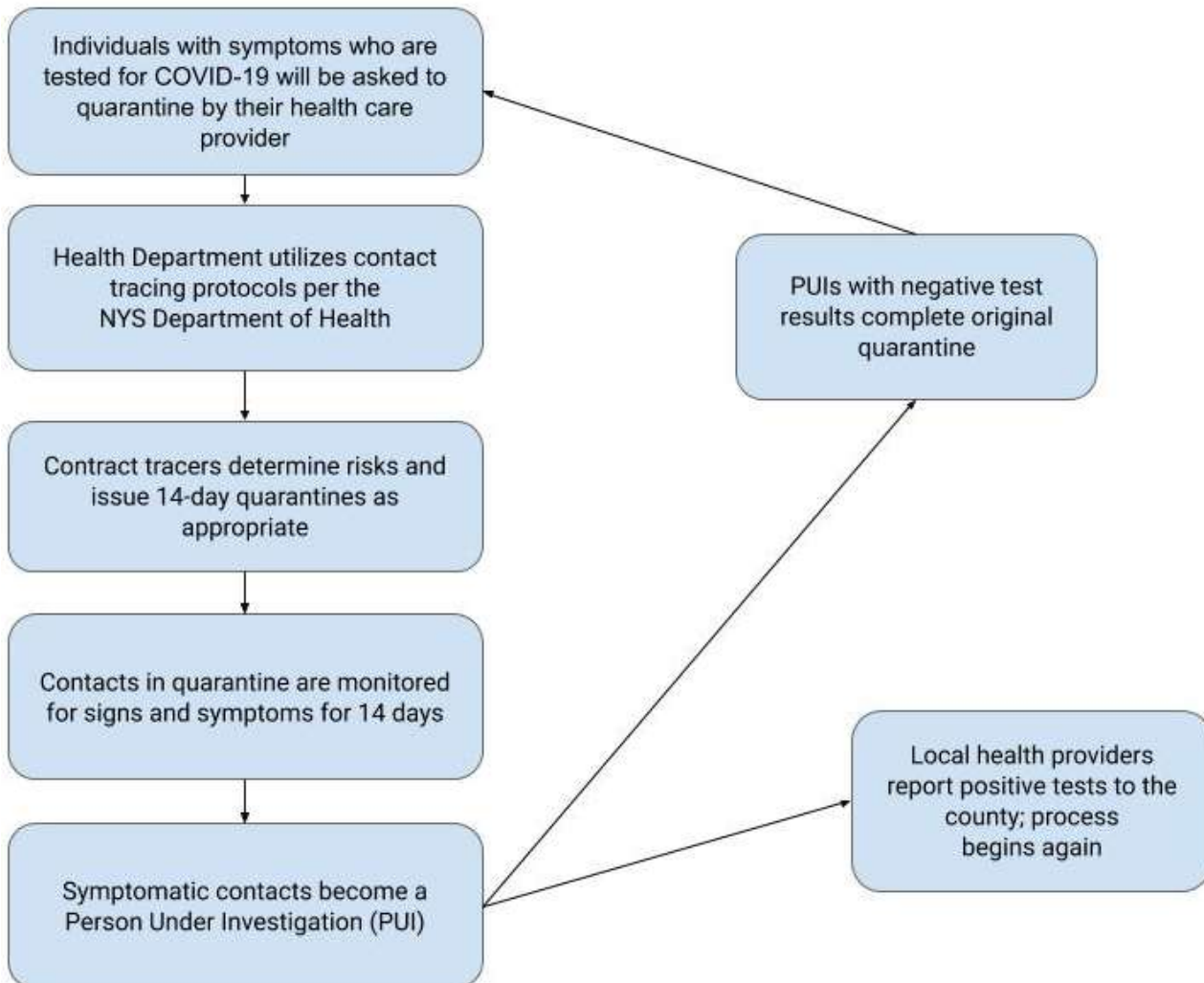
The Madison County Health Department will be responsible for all contact tracing as they would any positive case of COVID-19 in Madison County. They will work closely with the school district and family to identify all close contacts. Those individuals will be notified and issued quarantine orders. They will receive daily follow-up calls from Madison County staff to monitor symptoms and ensure compliance. The Madison County Health Department will provide the school district with guidance related to cleaning and disinfecting, as well as additional testing of students or staff.

Guidance from the Madison County Health Department on a school closure related to a positive case

- School closure depends on the rate of infection in the community.
- Closure will occur with the consultation and guidance of the Madison County Health Department and can vary depending on the situation.

COVID-19 Student Contact Monitoring Process

Contact Monitoring Process



School administrators, school health staff and student support services will provide the health department with information and assistance with its investigation upon request.